

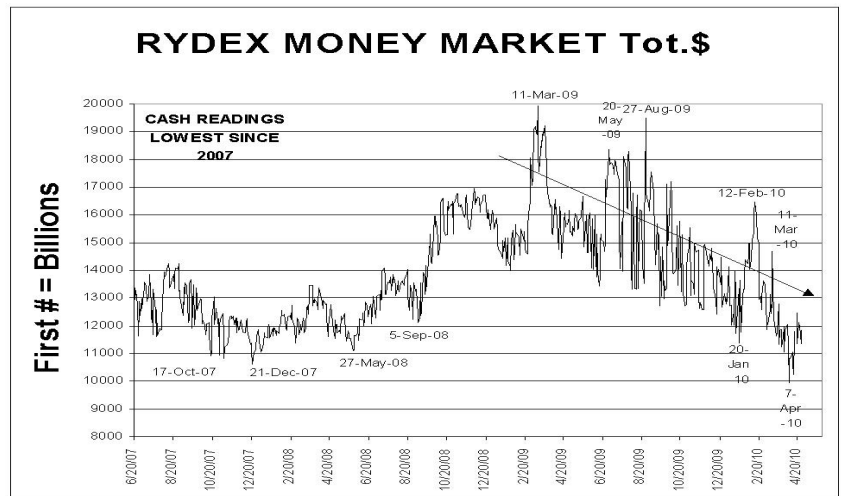
We have just now entered our time band for the next probable Crash. The Bradley Model goes down from now to the huge planetary alignment around August 1. In contrast, the Mars-Uranus Crash Cycle begins at that time & continues forward to a maximum through March 2011. Within this dichotomy we have propounded that our best bet is for a potential Crash between May 1 and November 1.

We are NOT saying that it will start in May and end in November. Only that sometime during this interim, a very serious decline will take place, and we imagine it will be much worse than a double dip that is envisioned by that set of analysts intent upon a "corrective phase."

The overwhelming projective information concerning this period is most definitely related to the approaching star patterns. We have been writing for several months about the potentially cataclysmic events likely to be associated with the most powerful planetary formations in all of recorded human history.

We are somewhat lacking as modern prophet in that we know neither the process nor the outcome of these signs and omens. Only that they are potent and ominous in the extreme. Modern technological Man has learned much, but has forgotten more, and in arrogance has built a multitude of technological towers of Babel, the completion of each has marked onset of economic and social dislocation. We could say, as those who came before us: "Turn back to God, (or the gods, in earlier times), before it's too late." Our opinion is that it is already too late. So... Turn back to God - couldn't hurt!

In our ignorance we have assumed that we



are harming our planet and that may be so. But we also assume that the planet cannot protect itself. Recent news headlines imply that Nature may be initiating her own protections!

As predicted here years ago, Global Warming would fail to become the greatest danger, and that earth would return to its cooling trends after planetary pictures ceased to aggravate Solar Activity. There may be one more 'spike' into the next Solar Maximum in 2012. The lack of model projections warmth has caused proponents to change the name to "Climate Change" and to blame every squiggle up or down to carbon dioxide. Who else besides the politically connected Goldman Sachs will profit from the trading of Carbon Dioxide FUTURES? A long list!

OK, our job is to project market trends. With one more potential market high around the 20th of May, or so, and even the possibility that the massive alignment could be the high, we will follow the trendlines, moving averages, momentum studies and on-balance volume studies (no entrails) to divine market outcomes. Be Aware! - ...and quick to change!

Last month we wrote: "Astrological factors include Saturn opposition to Uranus on April 26 which could certainly put a crimp in the Bullish market activity for a time..." April 27 DJIA dropped -213.04, largest single down day since February 4 (-268.37) where we had written: "FEB 5-6 = Jupiter activates the Saturn/Pluto square...more down markets than we've seen for awhile late Jan-into Feb." Missed 1 day on either side. There is no perfect answer. Chart atop this page shows very low Institutional Cash! Bearish!

We will Short at the 50% level on any close below 1140 in the S&P500 Cash (SPX) or, if you prefer, a close below 10,600 vs. the Dow Jones Indu. Avg. (DJIA). If activated, place Stoploss Orders 5% above your shorting price.

Increase to 200% Short on 2nd consecutive close below SPX 1060 or DJIA 10,000. Place 4% Stoploss on new positions.

Arch Crawford will be speaking (among others) for CMRE at the Union League Club 38th & Park Ave, NYC May 20, 2010 begins 4:45

For Info Elizabeth Currier (704-598-3717) cmre@bellsouth.net \$195 for non-members

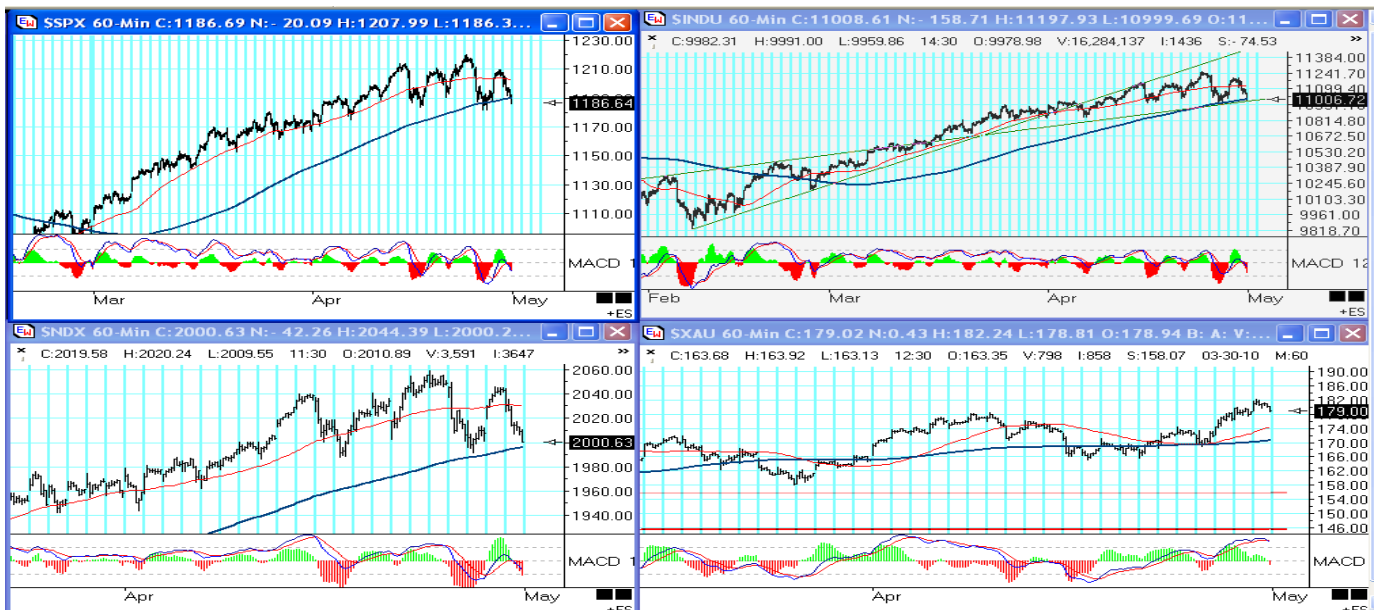
VITAL SIGNS

DJIA STOP = 11,080; S&P500 = 1195.43
DJIA STOPPED April 14 @ 11,123.11
S&P500 STOPPED April 12 @ 1196.48

SHORT at 50% level on a Close Below 1140 in SPX (500 Cash) or 10,600 in DJIA; Place 5% Stoploss

SHORT 200% on 2 consecutive Closes below S&P 1060 or DJIA 10,000
Place 4% Stoploss on the new Shorts if hit

ALL OUR STOPS ARE CLOSE ONLY!



HOURLY CHARTS OF MAJOR INDICES SHOW MOMENTUM LOSS & MACD SELL SIGNALS

ALL Major Indices have stalled until their 200-Hour Moving Averages (Dark Blue rising lines) have caught up with their current price levels. This brings about an interesting testing period, whereby it must be decided whether to break straightaway into a more serious corrective phase, or to bounce now into a longer, more complex configuration. These short term charts appear to have made a Head-and-Shoulder topping pattern. However, it is possible that these are so small that the entire development to date may morph into a larger pattern, with this H-&S becoming the Left Shoulder of a larger TOP with a New High as a new Head. This would extend the favorable portion to a somewhat longer sequence, although probably not much higher. It might give present stockholders more opportunities to get out at better prices. In this extremely tense atmosphere, don't press your luck!

The number of 52-week New Highs on the NYSE have continued to expand, but very gradually with time gaps between. For instance, there were 177 on August 3, 354 on September 16, 462 on October 14, 523 on January 23, 601 on March 17, 611 on April 14 and 674 on April 26. The first two increases were over 100 each, and that has moderated considerably, but cannot be counted negative, at all, yet. The sharp, quick drop to 92 last Friday could be an early warning, and the 10-day moving average is forming a 'rising wedge', considered a technical negative. Though it may give a sell signal quickly with further price deterioration in the averages, we are not trying to second-guess this indicator, as it must be considered a current positive.

The MACD series at the bottom of charts is another story, having given several Sell signals already, from succeeding lower high levels, clearly depicting deterioration from the momentum standpoint. Sometimes, it only takes once to call a change in trend from up to down. The best signals occur on a second 'crossing' at a lower level than the original preceding it. Both the S&P500 and DJIA (INDU) charts show not one but TWO such lower crossings, giving FOUR signals altogether. This has been a frustrating series to depend on during this strong rally phase. The NDX (NASDAQ 100 Index) shows three MACD sells, each following one lower than the last – an especially weak (strong negative) signal.

All 3 indices have broken steepest trend channel lines and 50-hour moving averages. It often takes the breaking of a 2nd trendline, and sometimes a 3rd, before the 'wheels come off'. If they decline any further now, they will pierce their 200-hour MA's – another more serious indicant.

The XAU (Gold & Silver stock index) shows 2 MACD sells, but with the second one on a higher level. This shows greater strength than any of the major stock indices. Gold ran up while the U.S. Dollar was also rising this week, de-coupling from its highly correlated inverse relationship which has been dominant in recent months. Likely the developing Greek Tragedy has precipitated a panic 'flight to [perceived] quality' in both USD and Gold. The weakness in other Sovereign Debt ratings has helped the U.S. Dollar maintain its "safe" label. This may not be a long term trend to follow. So far, all the talk of leaving the dollar has not manifested any significant withdrawal.



**TEN-YEAR BONDS HAVE FORMED A TWO-YEAR HEAD-AND-SHOULDER TOP!
BUT...**

We showed the weekly chart of this 10-year Bond chart last month. Since then, a rally has cast some doubt on the supposed direction. A daily chart of the 10-Year Bonds [top] show the recent rise to the 'outside' trend line which represents some potential resistance to further progress. Technically, a trader would short here, against this trendline, at about 117-29, and turn around and Buy on an upward break above 118-08. You could even make the "reverse stop" a bit tighter to around 118-3 or 4 area.

If and when the Bond price drops through the 'neckline' at 115, the downside 'count' would initially carry to the 103-105 level, matching the 2007 lows. Several developed countries have raised rates recently, and the U.S. and China have raised reserve requirements; China has increased these requirements twice recently, and they are the controlling entity in these affairs, of late.

A breakout above 119 could point to an immediate acceleration to the 121-123 area, and would again become a Short at resistance there.

ON ANOTHER MATTER...

AZ an Arizonan, we support the state's position on border security, as do 70% of us [and 50% of the rest of Americans]. Even John McCain, who was positioned against it previously, has had to come on board, only because he is up for re-election. The firestorm over the entire affair can be explained ONLY because the hypocritical vermin of DC are getting paid by their corporate owners to let the cheap labor in, while WE the PEOPLE get stuck with ALL their expenses in social services, etc. We understand that it is the ONLY job of the Federales [according to our Constitution] to secure our borders and protect us with equal Justice under the Law. This little PROD has these incumbents enraged and calling us all kinds of names at the top of their lungs. Are we hitting their pocketbooks?

Although the Republicans are a touch closer to our needs on this issue today, Republicans have historically done NO BETTER in upholding the laws regarding our borders.

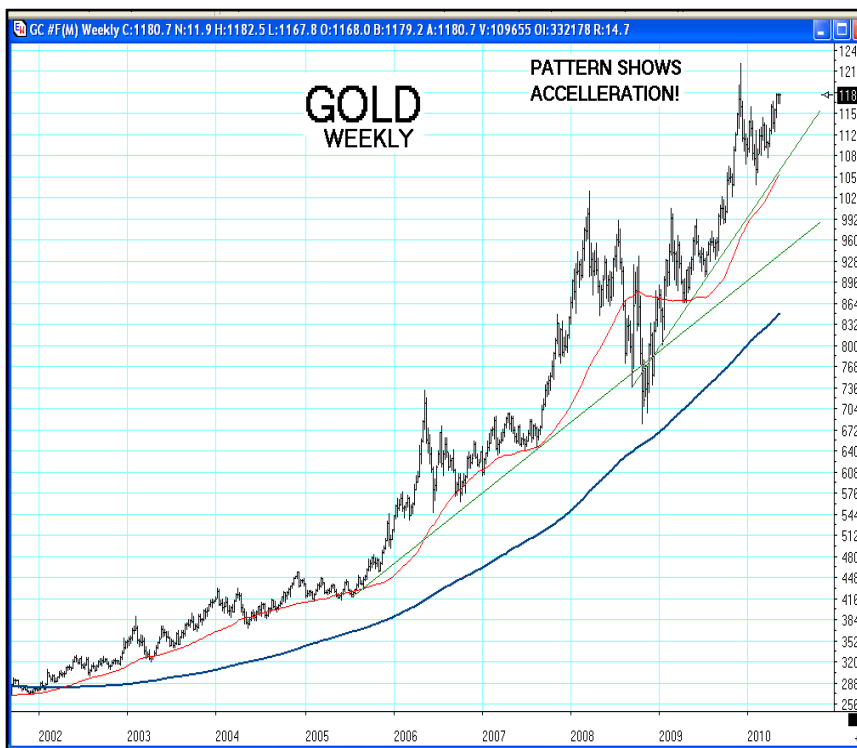
What you do NOT hear from our controlled news services is that several other states are considering passing the SAME Law!

"Basically, the only difference between the Republicans and the Democrats today is that the Democrats want to tax and spend, and the Republicans want to borrow and spend, But both of them want to spend. They spend like drunken sailors, except that's an insult to sailors because at least sailors are spending their own money."
- Chuck Baldwin -Presidential candidate of the Constitution Party

The **PRECIOUS METALS** and **OIL** are gaining ground steadily. **CRUDE** popped to \$86.50, just a hair from its 18-month high of \$87.09 on April 6. It may well be moving up to a new 'box' between 85 and 100, as mentioned last month.

SILVER made a new high for the recent rally and is about the same level as the highs last January. **GOLD** remains several dollars from its December peak but is rapidly approaching it. [Chart at right appears to show an accelerating price structure.]

We mention in the Astronomic section (below) that May and June are filled with astronomic relationships with Sun, Mars, Uranus and Pluto which have often been associated with on-going battles or more persistent War activity. If these dangers solidify into actualities, **GOLD and OIL** could put on 'spikes' into sharply higher prices.



Meantime, the **U.S.DOLLAR** has begun to slow its momentum, but if incipient sovereign debt problems actualize, our currency could gain from a further 'flight to quality' or at least 'percieved' quality. There are several shoes waiting to drop in addition to the countries whose ratings were dropped by S&P last week – Dubai, for instance. One fairly safe place to keep some money is German Bunds. They may gain if the European Union begins to crumble, or should we say, continues to crumble?

ASTRONOMIC ACTIVITY

- APR 28 = Full Moon in Scorpio, opposing Sun/Mercury conjunction and 135 deg. to Jupiter = Optimism is misplaced – excesses!
Best bet for a market high during this period, if only on a bounce, could be April 28-29. **SHORT** - If technical signals support it.
- MAY 3-4 = Sun/Mars/Saturn/Uranus/Neptune combination = “Being summoned for War!” “Death of male persons” “Physical separations”
These quotes come from *Rules for Planetary Pictures* by Alfred Witte (1928) and suggests plenty of action this week also May 6!
More indications for hostilities appear on May 10, 12, 17, 19, 23, 25, 27, 28, 30 & 31 - Looks like something **BIG** may be UP!
- MAY 6 = Mars contra-parallel Pluto = Power struggles; Jupiter contra-parallel Saturn = Freedom/expansion oppose authority/ constriction.
- MAY 10 = Sun 135 deg. to Pluto, Sun parallel Mars = “Fanaticism, Violence, War, Upset or shock through intervention of higher power.”
- MAY 11-13 = Mercury Direct Station, Sun contra-parallel Pluto, New Moon = Good time to start new projects! Urge to manipulate?!
- MAY 18-19 = From sometime on Tue May 18, Gold & Oil will likely have an **EXTREME UPMOVE** until near close on Wed May 19!
We **ALWAYS** keep Stoploss Orders with brokers on the trading floor – just in case our projections don't work as we expect.
- MAY 23 = Sunday very early Jupiter opposes Saturn = disappointing economic news +/-3 days; Very late Venus opp Pluto = Power struggles.
- MAY 25 = Tuesday night Sun 150 deg. to Pluto; MAY 27 = Full Moon, Uranus enters Aries = Revolutionary movements across the globe!
- MAY 30-31 = Saturn Direct Station, Neptune Retrograde Station = Over the few days +/-, emphasis turns from Inflation to Deflation!!
- JUN 3-4 = Mercury 150 deg to Pluto, Mars opposition Neptune = Strange happenings may put Gold/Oil sharply higher.
- JUN 7-11 = Markets swing wildly in both directions – Fast traders may make out well = Must be watching tape for fast changes!
- JUN 14-15 = Best Bet for a Rally **HIGH** in our opinion . Increase shorting strategies.

ATTENTION: The CP newsletters are usually mailed 1st Monday. Next CP will be out Monday, June 7.